

DEPARTMENT OF THE ARMY TECHNICAL MANUAL

Organizational Maintenance Repair Parts and  
Special Tools list

**RADAR SURVEILLANCE SET**  
**AN/APS-94D**  
**FSN 5841-179-8503**

---

Headquarters, Department of the Army, Washington, D.C.  
31 May 1973

---

*Current as of 1 March 1973*

	Paragraph	Page
<b>Section I. INTRODUCTION</b>		
<b>Scope</b> -----	1	1
General -----	2	1
Explanation of Columns-----	3	2
Special Information -----	4	3
How to Locate Repair Parts -----	5	3
Federal Supply Codes for Manufacturers -----	6	3
Recommendations for Maintenance Publication Improvements -----	7	4
<b>II. REPAIR PARTS FOR ORGANIZATIONAL MAINTENANCE</b> -----		6
<b>III. SPECIAL TOOLS, TEST AND SUPPORT EQUIPMENT (NOT APPLICABLE)</b> -----		
<b>IV. INDEX-FEDERAL STOCK NUMBER AND REFERENCE NUMBER-CROSS-REFERENCE TO ITEM SEQUENCE NUMBER</b> - - - - -		7
<b>V. INDEX-REFERENCE DESIGNATION CROSS-REFERENCE TO ITEM-SEQUENCE NUMBER</b> -----		8

SECTION I

INTRODUCTION

1. Scope

This manual lists repair parts required for the performance of organizational maintenance of the AN/APS-94D.

2. General

This Repair Parts List is divided into the following sections :

*a. Repair Parts for Organizational Maintenance-Section II.* A list of repair parts authorized for the performance of maintenance at the organizational level.

*b. Special Tools, Test and Support Equipment -Section III.* Not applicable.

*c. Index-Federal Stock Number and Reference Number Cross-Reference to Items Sequence Number-Section IV.* A list of Federal Stock Number in ascending alpha-numerical sequence, cross-referenced to the item sequence number.

*d. Index-Reference Designation Cross-Reference to Item Sequence Number-Section V.* A list of Reference Designation numbers, in ascending alpha-numerical sequence, cross-referenced to Item Sequence Numbers.

### 3. Explanation of Columns

The following provides an explanation of columns in the tabular lists in section II.

*a. Source, Maintenance, and Recoverability Codes (SMR), Column 1.*

(1) *Source code.* This column indicates the selection status and source for the listed item. Source codes are:

<i>Code</i>	<i>Explanation</i>
<b>PA</b>	-Item procured and stocked for anticipated or known useage.
<b>PB</b>	-Item procured and stocked for insurance purposes because essentiality dictates that a minimum quantity be available in the supply systems.
<b>PC</b>	-Item procured and stocked and which otherwise would be code PA <b>except</b> that it is deteriorative in nature.
<b>PD</b>	-Support item, excluding support equipment, procured for initial issue or outfitting and stocked only for subsequent or additional initial issues or outfittings. Not subject to automatic replenishment. This code should be used on maintenance float items.
<b>PE</b>	—Support equipment procured and stocked for initial issue or outfitting to specified maintenance repair activities.
<b>PF</b>	—Support equipment which will not be stocked but which will be centrally procured on demand.
<b>PG</b>	—Item procured and stocked to provide for sustained support for the life of the equipment. It is applied to an item peculiar to the equipment which because of probable discontinuance or shutdown of production facilities would prove uneconomical to reproduce at a later time.
<b>KD</b>	—An item of depot overhaul/repair kit and not purchased separately. Depot kit defined as a kit that provides items required at the time of overhaul or repair.
<b>KF</b>	—An item of a maintenance kit and not purchased separately. Maintenance kit defined as a kit that provides an item that can be replaced at organizational or direct support or general support levels of maintenance.
<b>KB</b>	—Item included in both a depot overhaul/repair kit and a maintenance kit.

<i>Code</i>	<i>Explanation</i>
<b>MO</b>	—Item to be manufactured or fabricated at organizational level.
<b>MF</b>	—Item to be manufactured or fabricated at direct support maintenance level.
<b>MH</b>	—Item to be manufactured or fabricated at general support maintenance level.
<b>MD</b>	—Item to be manufactured or fabricated at depot maintenance level.
<b>AO</b>	—Item to be assembled at organizational level.
<b>AF</b>	—Item to be assembled at direct support maintenance level.
<b>AH</b>	—Item to be assembled at at general support maintenance level.
<b>AD</b>	—Item to be assembled at depot maintenance level.
<b>XA</b>	—Item is not procured or stocked because the requirements for the item will result in the replacement of the next higher assembly.
<b>XB</b>	—Item is not procured or stocked. If not available through salvage, requisition.
<b>x c</b>	—Installation drawing, diagram instruction sheet, field service drawing, that is identified by manufacturers' part number.
<b>BLANK</b>	—Support items listed in this RPSTL-TM assigned maintenance and recoverability codes and no source codes can be requisitioned with justification.

#### NOTE

Cannibalization or salvage may be used as a source of supply for any items source coded above except those coded XA and aircraft support items as restricted by AR 700-42.

(2) *Maintenance Code.* Indicates the lowest category of maintenance authorized to install the repair part and/or use the special tool or test equipment for each application. Capabilities of higher maintenance categories are considered equal or better. Maintenance codes are:

<i>Code</i>	<i>Explanation</i>
<b>0</b>	Crew/operator

(3) *Recoverability Code.* Indicates whether unserviceable items should be returned for recovery or salvage. Items not coded are nonrecoverable. Recoverability codes are:

Code	Explanation
Z	-Nonrepairable item. When unserviceable, condemn and dispose at the level indicated in the first digit of the maintenance code.
Q	-Repairable item. When uneconomically repairable, condemn and dispose at organizational level.
F	-Repairable item. When uneconomically repairable, condemn and dispose at the Direct Support Level.
H	-Repairable item. When uneconomically repairable, condemn and dispose at the General Support Level.
D	-Repairable item. When beyond lower level repair capability, return to depot. Condemnation and disposal not authorized below depot level.
L	-Repairable item. Repair condemnation and disposal not authorized below/Specialized Repair Activity level.
A	-Item requires special handling or condemnation procedures because of specific reasons (i.e., precious metal content, high dollar value, critical material or hazardous material).

b. *Federal Stock Number, Column 2.* This column indicates the Federal Stock Number assigned to the item and will be used for requisitioning purposes.

c. *Description, Column 3.* Indicates the Federal item name and any additional description of the item required. A part number or other reference number is followed by the applicable five-digit Federal Supply Code for manufacturers in parentheses. On subsequent appearances of an item, the part number and Federal supply code is replaced by "SAME AS" (applicable sequence number).

d. *Unit of Measure (U/M), Column 4.* A two character alphabetic abbreviation indicating the amount of quantity or the item upon which the allowances are based, e.g., ft., ea., pr., etc.

e. *Quantity Incorporated in Unit, Column 5.* This column indicates the quantity of the item used in the assembly. A "V" appearing in this column in lieu of a quantity indicates that a definite quantity cannot be indicated (e.g., shims, spacers, etc) .

f. *Illustration, Column 7.* This column is divided as follows :

(1) *Figure number, column 7a.* Indicates the figure number of the illustration in which the item is shown.

(2) *Item number, column 7b.* Indicates the callout number used to reference the item in the illustration.

#### 4. Special Information

a. The following publications pertain to AN/APS-94D and its components:

TM11-5895-578-20P - - - Organizational Maintenance Repair Parts and Special Tools List: Radar Surveillance Set AN/APS-94D

TM11-5895-578-35P — Direct Support, General Support and Depot Maintenance Repair Parts and Special Tools List: Radar Surveillance Set AN/APS-94C

b. Repair parts mortality is computed from failure rates derived from experience factors with the individual parts in a variety of equipments. Variations in the specific application and periods of use of electronic equipment the fragility of electronic piece parts, plus intangible material and quality factors intrinsic to the manufacture of electronic parts, do not permit mortality to be based on hours of end item use. However, long periods of continuous use under adverse conditions are likely to increase repair parts mortality.

#### 5. How to Locate Repair Parts

a. When Federal stock number or reference number is unknown :

(1) *First.* Review the illustrations to, determine if the repair part is shown for organizational maintenance and note the reference designation, if applicable.

(2) *Second.* Using the Reference Designation Cross-Reference to Item Sequence Number Index (Sec. V) find the reference designation and note the item sequence number listed.

(3) *Third.* Locate the item sequence number in the Repair Parts List (Sec. II).

b. When Federal stock number of reference number is known:

(1) *First.* Using the Federal Stock Number and Reference Number Index (Sec. IV) find the pertinent number and note the item sequence number.

(2) *Second.* Locate the item sequence number in the Repair Parts List (Sec. II).

#### 6. Federal Supply Codes for Manufacturers

Code	Manufacturer
00141	PIC Design Corp., 477 Atlantic Ave., East Rockaway, NJ. 11518
08806	General Electric Co., Miniature Lamp Dept., Nela Park, Cleveland, Ohio 44112

<b>Code</b>	<b>Manufacturer</b>
<b>15084</b>	<b>Aerospace Knob Co., P.O. Box 3156, South El Monte, Calif. 90502</b>
17587	<b>Lamps Inc., 19220 S. Normandie Ave., Torrance, Calif. 90502</b>
22040	<b>Felsenthal Instruments Co., 7450 W. Wilson Ave., Chicago, Ill. 60656</b>
<b>71744</b>	<b>Chicago Miniature Lamp Works, 4433 Ravenswood Ave., Chicago, Ill. 60640</b>
80058	<b>Joint Electronic Type Designation System</b>
<b>94990</b>	<b>Motorola Inc., Government Electronic Div., Aerospace Center, 8201 E. McDowell Road, Scottsdale, Ariz 85252</b>
95987	<b>Wickesser Co. Inc., 4444 West Irving Park Road, Chicago, Ill.</b>

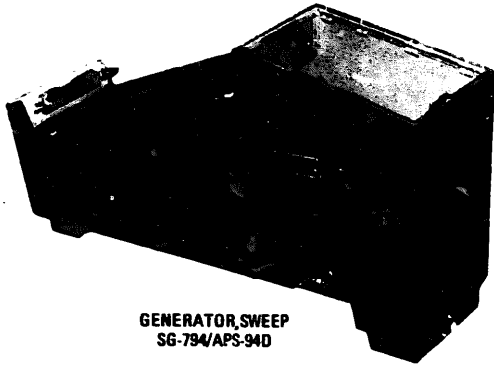
<b>Code</b>	<b>Explanation</b>
<b>96906</b>	<b>Military Standards Promulgated by Standardization Div. Directorate of Logistic Service, DSA</b>

7. Recommendations for Maintenance  
Publication Improvements

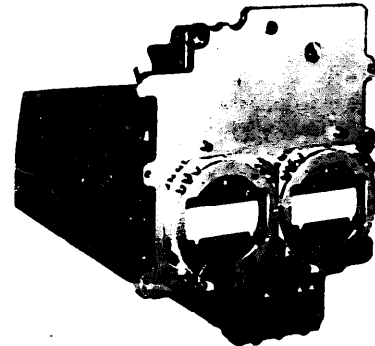
Reporting of errors, omissions, and recommendations for improving this publication by the individual user is encouraged. Reports should be submitted on DA Form 2028 (Recommended Changes to Publications) and forwarded direct to Commander, US Army Electronics Command, ATTN : AMSEL-ME-NMP-AD, Fort Monmouth, NJ 07703.



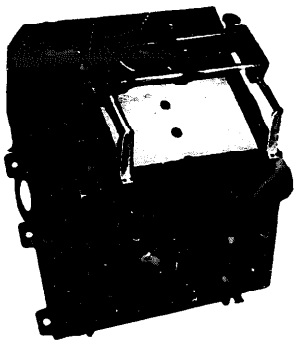
ANTENNA  
AS-2199/APS-94D



GENERATOR, SWEEP  
SG-784/APS-94D



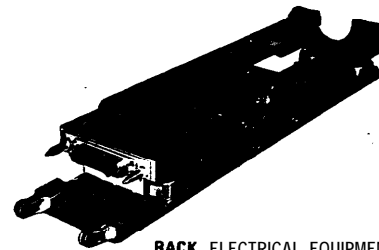
INDICATOR, RADAR TARGET  
IP-923/APS-94D



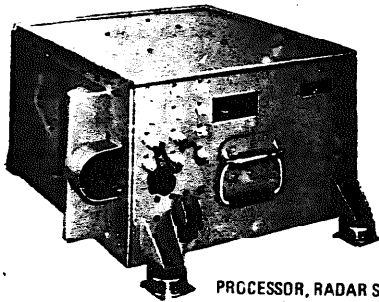
RECORDER-PROCESSOR-VIEWER, RADAR MAPPING  
RO-352/APS-94D



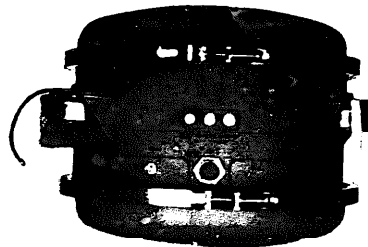
CONTROL, RADAR SET  
C-7645/APS94D



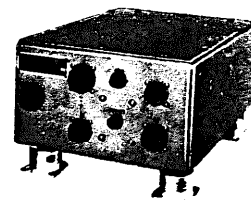
RACK, ELECTRICAL EQUIPMENT  
MT-4015/APS-94D



PROCESSOR, RADAR SIGNAL  
SP-374/APS-94D



RECEIVER-TRANSMITTER, RADAR  
RT-899/APS-94D



INTERCONNECTING BOX  
J-2794/APS-94D

EL 5895-578-12-TM-1

Figure 1-1. Surveillance Set, Radar AN/APS-94D.

## SECTION II REPAIR PARTS FOR ORGANIZATIONAL MAINTENANCE

(1) SMR CODE	(2) FEDERAL STOCK NUMBER	(3) DESCRIPTION  REFERENCE NUMBER & MFR. CODE	(4) UNIT OF MEAS	(5) QTY INC IN UNIT	(6) 15-DAY ORGANIZATIONAL MAINTENANCE ALM				(7) ILLUSTRATIONS	
					(a) 1-5	(b) 6-20	(c) 21-50	(d) 51-100	(a) FIG NO.	(b) ITEM NO. OR REFERENCE DESIGNATION
AOO1	5841-179-8503	RADAR SURVEILLANCE SET: ANAP894D; (80058)	EA	1						
FOODD AOO2	5985-179-8430	ANTENNA: A82199AP894D; (80058)	EA	1					1-1	4
FOODD A771	5841-143-4337	CONTROL, RADAR SET: CT645APS94D (80048)	EA	1					1-1	9
PAOZZ E212	5355-479-8918	KNOB: FMA1836; (22040)	EA	1	*	*	*	*		9MP58
PAOZZ E213	5355-433-9606	KNOB: 36-25398K01; (94490)	EA	3	*	*	*	*		9MP59 THRU 9MP61
PAOZZ E215	5355-194-5979	KNOB: 533-051-02; (15084)	EA	3	*	*	*	*		9MP62 THRU 9MP64
FOODD E274	5841-179-8505	INDICATOR, RADAR TARGET: 1P923APS94D; (80058)	EA	1					1-1	6
FOODD C870	5841-143-4336	INTERCONNECTING BOX: J2794APS94D; (80058)	EA	1					1-1	1
FOODD E002	5841-179-8504	PROCESSOR, RADAR SIGNAL: 01P00683A001; (94990)	EA	1					1-1	3
FOODD E918	5841-935-9543	RACK, ELECTRICAL EQUIPMENT: 01P00688A001; (94990)	EA	1					1-1	8
FOODD E036	5841-179-8506	RECEIVER TRANSMITTER, RADAR: RT599AP894D; (94990)	EA	1					1-1	2
FOODD F653	5310-407-3663	KNOB: 43-24891K01; (94990)	EA	3	*	*	*	*		2MP88 THRU 2MP90
PAOZZ E780	5841-179-8507	RECORDER-PROCESSOR-VIEWER, RADAR MAP: 01P00687A001; (94990)	EA	1					1-1	7
FOODD E654	3010-238-9361	MAGAZINE, RADAR MAPPING RECORDER: 01P00752A001; (94990)	EA	1						7A2
PAOZZ F896	5355-159-8371	KNOB: 36P09558A001; (94990)	EA	1	*	*	*	*		7A2MP59
PAOZZ F898	5355-401-3528	KNOB: 36P13612A001; (94990)	EA	1	*	*	*	*		7A2MP60
PAOZZ F900	5355-231-7780	KNOB: 36P13865A001; (94990)	EA	1	*	*	*	*		7A2MP381
PAOZZ F910	6240-155-7957	LAMP, INCANDESCENT: 328; (08108)	EA	1	*	*	*	*		7A2DS1MP1
PAOZZ G050		LAMP, INCANDESCENT: CM23-21-04-200; (71744)	EA	53	*	*	*	*		7A2DS2MP11 THRU 7A2DS2MP63
PAOZZ G128	5355-833-9168	KNOB: 36P09955A001; (00141)	EA	2	*	*	*	*		7A2MP402, 7A2MP408
FOODD G153		RECORDER, RADAR MAPPING: 01P00629A001; (94990)	EA	1						7MP1
PAOZZ G581	5355-478-8918	KNOB: SAME AS E212	EA	3						7MP294 THRU 7MP296
PAOZZ G585	6240-660-2941	LAMP, INCANDESCENT: MS24367-683; (96906)	EA	10	*	*	*	*		7A3MP1 THRU 7A3MP10
PAOZZ G586	6240-168-0411	LAMP, INCANDESCENT: 62; (17537)	EA	2	*	*	*	*		7A3MP11, 7A3MP12

**SECTION IV INDEX-FEDERAL STOCK NUMBER & REFERENCE NUMBER CROSS-REFERENCE  
TO ITEM SEQUENCE NUMBER**

FEDERAL STOCK NUMBER		ITEM SEQUENCE NUMBER		FEDERAL STOCK NUMBER		ITEM SEQUENCE NUMBER		FEDERAL STOCK NUMBER		ITEM SEQUENCE NUMBER	
3010-238-9361		F654		5841-143-4336		C870					
5310-407-3663		E780		5841-143-4337		A771					
5355-159-8371		F896		5841-179-8503		A001					
5355-194-5979		B212		5841-179-8504		D062					
5355-231-7780		F900		5841-179-8505		C274					
5355-401-3526		F898		5841-179-8506		E036					
5355-433-9609		B213		5841-179-8507		F653					
5355-479-8918		B212		5841-935-9543		D918					
5355-479-8918		G581		5985-179-8430		A002					
5355-833-9168		G128		6240-155-7957		F910					
				6240-168-0411		G586					
				6240-660-2941		G585					
<u>REF. NO.</u>	<u>MFG. CO.</u>	<u>ITEM SEQ. NO.</u>									
AWAP94D	80058	A001									
AS2199APS94D	80058	A002									
CM23-21-04-200	71744	G050									
C7645APS94D	80058	A771									
FMA1836	22040	B212									
FMA1836	22040	G581									
J2794APS94D	80058	C870									
MS24367-683	96906	G585									
RT899APS94D	94990	B036									
01P00629A001	94990	G193									
01P00683A001	94990	D062									
01P00687A001	94990	F653									
01P00688A001	94990	D918									
01P00752A001	94990	F654									
1F923APS94D	80058	C274									
328	08108	F910									
36-24398KD1	94990	B213									
36P09558A001	94990	F896									
36P09955A001	00141	G128									
36P13612A001	94990	F898									
36P13865A001	94990	F900									
43-24891KD1	94990	E780									
533-051-02	15084	B215									
62	17537	G586									

**SECTION V INDEX-REFERENCE DESIGNATION  
CROSS-REFERENCE TO ITEM SEQUENCE NUMBER**

REFERENCE DESIGNATION	ITEM SEQUENCE NUMBER	REFERENCE DESIGNATION	ITEM SEQUENCE NUMBER	REFERENCE DESIGNATION	ITEM SEQUENCE NUMBER
1	C870	7A2DS2MP39	G050	7A3MP10	G585
2	E036	7A2DS2MP40	G050	7A3MP11	G586
2MP88	E780	7A2DS2MP41	G050	7A3MP12	G586
2MP89	E780	7A2DS2MP42	G050	7MP1	G193
2MP90	E780	7A2DS2MP43	G050	7MP294	G581
3	B062	7A2DS2MP44	G050	7MP295	G581
4	A002	7A2DS2MP45	G050	7MP296	G581
6	C274	7A2DS2MP46	G050	8	D918
7	F653	7A2DS2MP47	G050	9	A771
7A2	F654	7A2DS2MP48	G050	9MP58	B212
7A2DE1MP1	F910	7A2DS2MP49	G050	9MP59	B213
7A2DS2MP11	G050	7A2DS2MP50	G050	9MP60	B213
7A2DS2MP12	G050	7A2DS2MP51	G050	9MP61	B213
7A2DS2MP13	G050	7A2DS2MP52	G050	9MP62	B215
7A2DS2MP14	G050	7A2DS2MP53	G050	9MP63	B215
7A2DS2MP15	G050	7A2DS2MP54	G050	9MP64	B215
7A2DS2MP16	G050	7A2DS2MP55	G050		
7A2DS2MP17	G050	7A2DS2MP56	G050		
7A2DS2MP18	G050	7A2DS2MP57	G050		
7A2DS2MP19	G050	7A2DS2MP58	G050		
7A2DS2MP20	G050	7A2DS2MP59	G050		
7A2DS2MP21	G050	7A2DS2MP60	G050		
7A2DS2MP22	G050	7A2DS2MP61	G050		
7A2DS2MP23	G050	7A2DS2MP62	G050		
7A2DS2MP24	G050	7A2DS2MP63	G050		
7A2DS2MP25	G050	7A2MP381	F900		
7A2DS2MP26	G050	7A2MP402	G128		
7A2DS2MP27	G050	7A2MP408	G128		
7A2DS2MP28	G050	7A2MP59	F896		
7A2DS2MP29	G050	7A2MP60	F898		
7A2DS2MP30	G050	7A3MP1	G585		
7A2DS2MP31	G050	7A3MP2	G585		
7A2DS2MP32	G050	7A3MP3	G585		
7A2DS2MP33	G050	7A3MP4	G585		
7A2DS2MP34	G050	7A3MP5	G585		
7A2DS2MP35	G050	7A3MP6	G585		
7A2DS2MP36	G050	7A3MP7	G585		
7A2DS2MP37	G050	7A3MP8	G585		
7A2DS2MP38	G050	7A3MP9	G585		



By Order of the Secretary of the Army:

**CREIGHTON W. ABRAMS**  
**General, United States Army**  
**Chief of Staff**

Official:

**VERNE L. BOWERS**  
**Major General United States Army**  
**The Adjutant General**

Distribution:

To be distributed in accordance with DA Form 12-36 (qty rqr block No. 67) Organizational maintenance requirements for AN/APS-94.

\*U.S. GOVERNMENT PRINTING OFFICE: 1973 503-990/67A

**END**

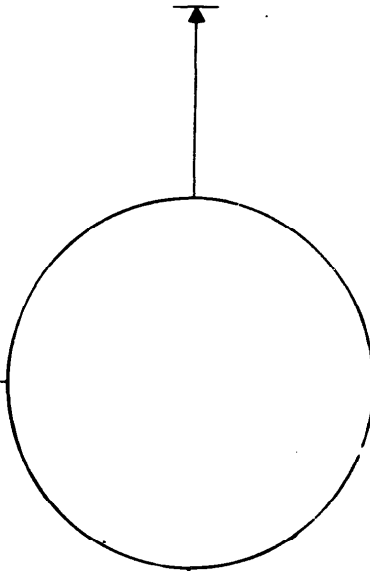
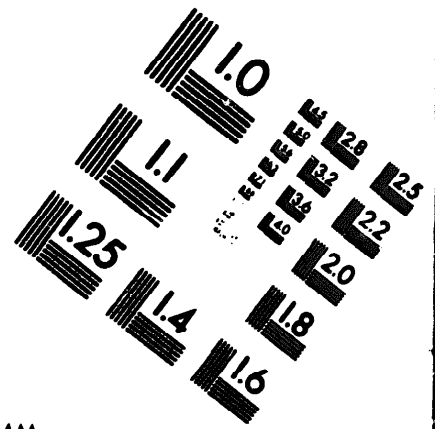
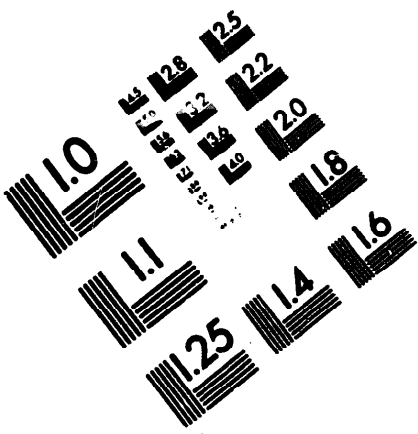
**12-08-82**

**DATE**





DEPARTMENT OF THE ARMY  
MICROFORM  
TEST TARGET



150 MM

1.0 mm (e= .81 mm)

ABCDEFGHIJKLMN OPQRSTUVWXYZ 1234567890  
abcdefghijklmnopqrstuvwxyz \$%&' / # 1/2 1/4 3/4 — = + x & @ \*

1.5 mm (e= 1.09 mm)

ABCDEFGHIJKLMN OPQRSTUVWXYZ 1234567890  
abcdefghijklmnopqrstuvwxyz \$%&' / # 1/2 1/4 3/4 — = + x & @ \*

2.0 mm (e= 1.37 mm)

ABCDEFGHIJKLMN OPQRSTUVWXYZ  
abcdefghijklmnopqrstuvwxyz  
1234567890 \$%&' / # 1/2 1/4 3/4 — = + x & @ \*

2.5 mm (e= 1.77 mm)

ABCDEFGHIJKLMN OPQRSTUVWXYZ  
abcdefghijklmnopqrstuvwxyz  
1234567890 \$%&' / # 1/2 1/4 3/4 — = + x & @ \*

1.0 mm (e= .81 mm)

ABCDEFGHIJKLMN OPQRSTUVWXYZ 1234567890  
abcdefghijklmnopqrstuvwxyz \$%&' / # 1/2 1/4 3/4 — = + x & @ \*

1.5 mm (e= 1.09 mm)

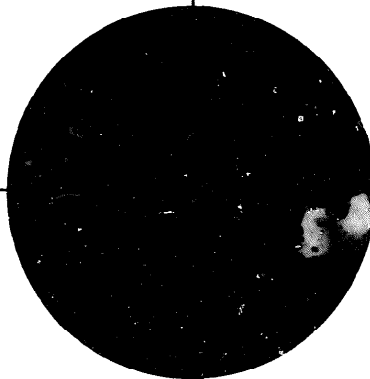
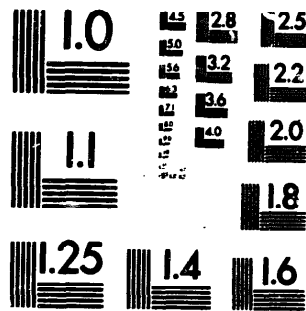
ABCDEFGHIJKLMN OPQRSTUVWXYZ 1234567890  
abcdefghijklmnopqrstuvwxyz \$%&' / # 1/2 1/4 3/4 — = + x & @ \*

2.0 mm (e= 1.37 mm)

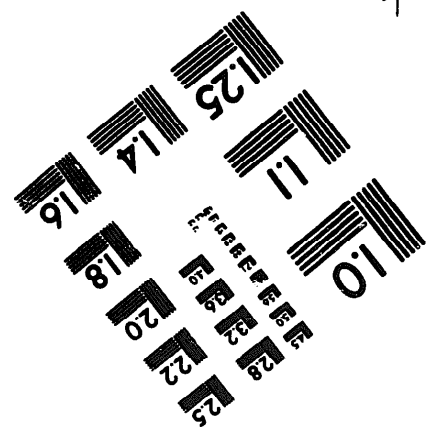
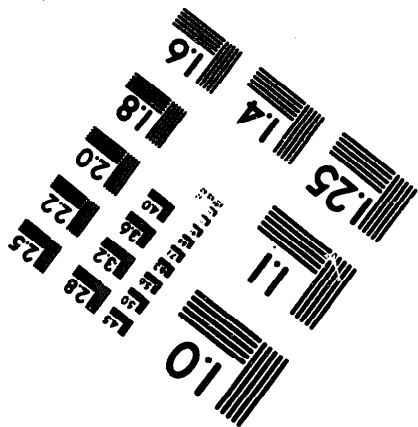
ABCDEFGHIJKLMN OPQRSTUVWXYZ  
abcdefghijklmnopqrstuvwxyz  
1234567890 \$%&' / # 1/2 1/4 3/4 — = + x & @ \*

2.5 mm (e= 1.77 mm)

ABCDEFGHIJKLMN OPQRSTUVWXYZ  
abcdefghijklmnopqrstuvwxyz  
1234567890 \$%&' / # 1/2 1/4 3/4 — = + x & @ \*



200 MM



250 MM